



A play by  
**TIM WHITNALL**  
 Directed by  
**RICHARD EVANS**

# The Sociable Plover

THIS AMATEUR PRODUCTION OF "THE SOCIABLE PLOVER" IS PRESENTED BY ARRANGEMENT WITH CONCORD THEATRICALS LTD. ON BEHALF OF SAMUEL FRENCH LTD



**The Richings Players**

*Two One Act Plays*

*Programme*

**5TH-8TH JULY 2023  
 IVER VILLAGE HALL**



**THE IVERS  
 PARISH COUNCIL**

# Girls

an explosive  
 play by  
**Evan Placey**

# Like

directed by  
**Bronte De La Salle and  
 Evelyn Stafford-Allen**

# That

THIS PLAY CONTAINS  
 SEXUAL THEMES AND  
 SOME ADULT LANGUAGE.  
 SEE GUIDANCE PAGE



THIS AMATEUR PRODUCTION OF "GIRLS LIKE THAT" IS PRESENTED BY ARRANGEMENT WITH NICK HERN BOOKS



# COME AND JOIN US!

We've been entertaining the Ivers since 1926 and we're always delighted to welcome new members.

Whether you prefer to be on the stage or in the wings, there is something for everyone to get involved in, with our friendly society.

We usually perform 3 productions a year and members are welcome from 6 years old, so why not get the whole family involved?

Our membership fees start from just £10 per year.

For more information, or to contact us, head to our website:  
[www.richingsplayers.co.uk](http://www.richingsplayers.co.uk) or follow us on **Instagram**, **Facebook** or **Twitter**...

*Come and join us, we can't wait to meet you!*





A play by  
TIM WHITNALL  
Directed by  
RICHARD EVANS

# The Sociable Plover

THIS AMATEUR PRODUCTION OF "THE SOCIABLE PLOVER" IS PRESENTED BY ARRANGEMENT WITH CONCORD THEATRICALS LTD. ON BEHALF OF SAMUEL FRENCH LTD

"Greetings and welcome to the rain beaten and wind-blown coast of Suffolk in winter, a stop-off point for migrating birds on their long and perilous journeys across continents in search of the conditions in which they can survive. You are about to meet Roy and Dave, two men removed from each other in terms of their ages, attitudes, and their outlooks on the future who, due to the storms and flooding in the area, are about to be locked in a ramshackle old bird hide with each other for an hour where secrets from their past will be unearthed and their dark intentions brought to light. Along the way there will be twists and turns and, I'll warn you now, you may well feel compelled to come back and watch this again to see how it plays once you know how the story unfolds!



This has been my first time directing and I was lucky enough to be able to cast two of the best actors in the company, Liam Tebbit and Tom McGrath, both of whom have come to truly embody their characters, and working with them has been an incredibly rewarding experience. A huge thank you to the RP Production Team, including Haydn Parnell, Joan Gibbs, Les Brewer, and Robin Bishop, without whom this show would simply not have gotten off the ground, and to Howard Gibbs, Laura Coady, Michael Lucas and Ev and Toby Stafford-Allen for all the advice and support along the way. Now, settle in, make yourself comfortable and prepare to be shocked!"

*Richard Evans*

Director of "The Sociable Plover"

# Girls

an explosive  
play by  
Evan Placey

# Like

directed by  
Bronte De La Salle and  
Evelyn Stafford-Allen

# That



THIS AMATEUR PRODUCTION OF "GIRLS LIKE THAT" IS PRESENTED BY ARRANGEMENT WITH NICK HERN BOOKS

"We have thoroughly enjoyed working together to create such a compelling, thought-provoking play, with such a wonderful group of girls.

"Girls Like That" serves as a powerful reminder of the importance of self-love, self-acceptance, and standing up for what we believe in. Our hope is that this production will ignite meaningful conversations about gender, identity, and social justice. Our talented ensemble cast has brought these complex characters to life with truth and vulnerability. They have worked tirelessly to convey the emotional journey of these young women. We thank you for joining us and hope you enjoy the show."

## *Bronte and Evelyn xx*

Directors of **'Girls Like That'**

Bronte would like to add - "I'd like to thank Ev, our cast and crew for making my directorial debut a fab one! And of course a huge Thank you to Richings Players as a society for all it has given me throughout the 11 years I've been a member. Richings is such a key part of my life and I'm glad to finally be able to give back as a director and I hope to continue to create more wonderful plays like this one!"



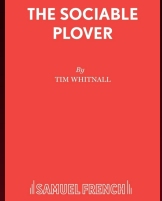
# About "The Sociable Plover"

Roy Tunt hovers on the brink of birdwatching greatness... arrives at a remote bird hide on the Suffolk Marshes at daybreak, intent on spotting the elusive Sociable Plover - the last of 567 native British birds... If he makes it, he will be added to the list of all time great twitchers... Today could be his big day... and he has a very strong hunch that he's going to get it right this time...

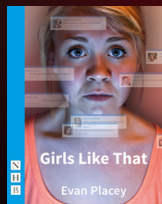
Tim Whitnall's play is a wrought, taut, exquisitely balanced black comedy that keeps the viewer glued to the seat until the final full stop. An hilarious, pointed play of manners at one point... a dark, tense thriller the next.

Written in 2005, it was revived at the 2009 Edinburgh Festival Fringe, directed by Tim, moving on to a successful run at the Adelaide Festival 2010, before returning for a subsequent UK tour.

"The Sociable Plover" continues to play internationally, performed by theatre companies, both professional and amateur.



# About "Girls Like That"




An urgent and explosive play that explores of the pressures on young people today in the wake of advancing technology. When a naked photograph of Scarlett goes viral, she becomes the centre of attention for all the wrong reasons. But while rumours run wild and everyone forms an opinion, Scarlett just stays silent...



Specially commissioned by Birmingham Repertory Theatre, Theatre Royal Plymouth and West Yorkshire Playhouse, Evan Placey's play "Girls Like That" was developed through work with young people from the three theatres and first performed by their youth theatre companies in 2013. It was revived at the Unicorn Theatre, London, in November 2014.



"Girls Like That" was named Best Play for Young Audiences at the Writers' Guild of Great Britain Awards 2015.



A play by  
TIM WHITNALL  
Directed by  
RICHARD EVANS

# The Sociable Plover



**ROY TUNT**  
Liam Tebbit



**DAVE JOHN**  
Tom McGrath



## PRODUCTION TEAM

**Director** - Richard Evans  
**Set Design and Construction** - Richard Evans & Haydn Parnell  
**Sound** - Robin Bishop  
**Lighting** - Les Brewer  
**Stage Manager** - Haydn Parnell  
**Costumes** - Joan Gibbs  
**Hair & Make Up** - Members of the Cast  
**Front of House Manager** - Pippa Vinall  
**The Players Bar** - Members of the Society  
**Box Office** - Helen Baker, Paul and Lis Dunham  
**Photography** - Ley Dobson  
**Poster Design, Programme & Publicity** - Will Torrent

## SCENES & LOCATIONS

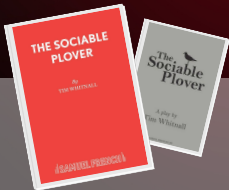
There is only one scene and one location, the interior of a broken-down old bird hide on the Suffolk coast, from which there is no escape.

## INCIDENTAL MUSIC

"Paraglide" by BT  
"White Shore Drive" by BT  
taken from the album "Everything You're Searching for is on the Other Side of Fear"



**IN REHEARSAL**



Concord Theatricals Ltd is the UK home of R&H Theatricals, Samuel French Ltd and Tams-Witmark, plus dozens of new signings every year. Our unparalleled roster includes the work of Irving Berlin, Agatha Christie, George & Ira Gershwin, Marvin Hamlisch, Lorraine Hansberry, Kander & Ebb, Lin-Manuel Miranda, Harold Pinter, Cole Porter, Terence Rattigan, Rodgers & Hammerstein, Thornton Wilder and August Wilson. We are the only firm providing truly comprehensive services to the creators and producers of plays and musicals, including theatrical licensing, music publishing, script publishing, cast recording and first-class production. Concord Theatricals is passionate about cultivating theatre and making it accessible for all. Beginning in 2020, a portion of our commission from every licence will be set aside to create a fund for significant annual donations to charitable organisations whose emphasis is to support theatre writers and composers, and music and drama education. With offices in London, New York and Berlin, we have the most expert team in the industry. We look forward to working with you to make theatre happen!

**Huge thanks to all of the Concord Theatricals team for all their help and support with "The Sociable Plover".**

# Girls

# Like

# That

an explosive  
play by  
Evan Flacey

directed by  
Evelyn Stafford-Allen  
and Bronte Delasalle



## Production Team

**Directors** - Bronte De La Salle and Evelyn Stafford-Allen  
**Set Construction** - Malcolm Roberts  
**Scenic Design** - Richard Evans  
**Sound** - Robin Bishop  
**Lighting** - Les Brewer  
**Stage Manager** - Haydn Parnell  
**Costumes** - Charlotte McLeish  
**Hair & Make Up** - Members of the Cast  
**Front of House Manager** - Pippa Vinall  
**The Players Bar** - Members of the Society  
**Box Office** - Helen Baker, Paul and Lis Dunham  
**Photography** - Ley Dobson  
**Poster Design, Programme & Publicity** - Will Torrent

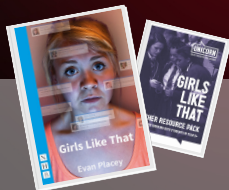
## Scenes & Locations

Scene 1 - St. Helen's School for Girls  
Scene 2 - St. Margaret's  
Scene 3 - The Swimming Pool  
Scene 4 - St. Margaret's  
Scene 5 - Tyler's Party  
Scene 6 - McDonald's  
Scene 7 - Tyler's House  
Scene 8 - St. Margaret's

## Incidental Music

'Run the World' - Beyonce  
'Last Friday Night' - Katy Perry  
'Teenage Dream' - Katy Perry  
'S&M' - Rihanna  
'Fight Back' - Neefex  
'Look What You Made Me Do' - Taylor Swift  
'Hate Me' - Ellie Goulding & Juice WRLD  
'Barbie Girl' - Aqua  
'Slut Like You' - Pink





## Nick Hern Books

Theatre publishers & performing rights agents



Nick Hern Books came into being in June 1988 when Nick Hern, formerly drama editor at Methuen, set up his own imprint under the aegis of Walker Books. Its first title in print was Nicholas Wright's play Mrs Klein, which opened at the National Theatre in August 1988 before transferring to the West End and Broadway. Today, Nick Hern Books is the UK's leading specialist performing arts publisher with over 1,500 plays and theatre books in our catalogue. We also license most of our plays for amateur performance. Their list of plays includes work by many of the UK's preminent playwrights, as well as some of the most exciting emerging writers. We work with major theatres and theatre companies across the UK and in Ireland to publish new plays alongside their professional premieres, often in the form of a 'programme/text' that combines the functions of theatre programme and playtext. They also publish many classic plays and plays in translation, together with a wide range of authoritative theatre books, many of them written by well-known theatre practitioners. Their titles are distributed internationally through our publishing associates: Theatre Communications Group in the USA, Currency Press in Australia and Playwrights Canada Press in Canada.

**Huge thanks to all of the Nick Hern Books team for all their help and support with 'Girls Like That'.**

**Our next  
production:**  
4th-7th  
October  
2023, Iver  
Village  
Hall



**The  
Richings  
Players**

**A PLAY BY DAVID WOOD, ADAPTED FROM  
THE NOVEL BY MICHELLE MARGORIAN**

# **GOODNIGHT MISTER TOM**

**DIRECTED BY PIPPA VINALL**

THIS AMATEUR PRODUCTION OF  
"GOODNIGHT MISTER TOM" IS PRESENTED BY  
ARRANGEMENT WITH CONCORD THEATRICALS LTD.  
ON BEHALF OF SAMUEL FRENCH LTD.  
[WWW.CONCORDTHEATRICALS.CO.UK](http://WWW.CONCORDTHEATRICALS.CO.UK)



**THE IVERS  
PARISH COUNCIL**



# The Richings Players